

Fire protection

Protection system should be well designed and maintained to adequately extinguish a fire. Types of fire extinguishers should be compatible according to each chemical's MSDS. The staffs are compulsory to operate the equipment effectively

Know your Fire Extinguisher

TYPE	WATER	FOAM SPRAY	ABC POWDER	CARBON DIOXIDE
Flammable Liquid	X	✓	✓	✓
Flammable Gases	X	X	✓	X

Emergency Response Plan

This is a written document that includes contacts of public fire brigade, in-house trained fire team and procedure for emergency isolation & evacuation.



Fire Scenario

Implementation of protection plan for chemical incident scenario is highly encouraged. Information on location of flammable materials on site, building layout as well as firefighting equipment must be available so that fire extinction can be conducted effectively.

Further Information:

Hanoi Head Office
6F, Sun Red River Bldg., 23 Phan Chu Trinh St., Hoan Kiem Dist., Hanoi
T (+84) 24. 3933 0704 · F (+84) 24. 3933 0706
Ext. 70
Mr. Ha Manh Hung Risk Engineer



HOW DOES THIS AFFECT YOUR COMPANY?

Nowadays, most manufacturing premises use flammable chemicals in their production process. Any flammable liquid possesses fire hazard if not properly handled or managed. Fire initiated from flammable liquids is highly dangerous since it is persistent and intensive. In some cases, the damage is so severe that completely burn down the whole facility and cause casualties.

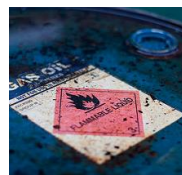
According to our data, several serious chemical fires happen due to improper usage and handling without sufficient control. As training is not fully implemented, staffs' reckless behavior leads to mistakes during processing; from which flammable



WHAT SHOULD YOUR COMPANY DO?

Alternative Consideration

It is necessary to review alternative for flammable liquid usage in manufacturing process, in order to limit presence of fire load.



Safe Storage

Generally, flammable liquids must be isolated in a well-ventilated area made with non-combustible materials. If possible, they should be located outside production area with limited necessary amount contained in safety can inside a Flammable Liquid Cabinet.

